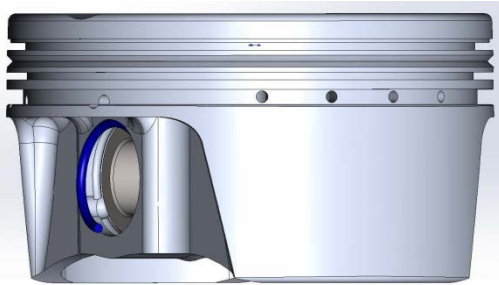




1902 Mc Gaw  
Irvine, CA 92614 USA  
P: 949-567-9000  
F: 949-567-9010  
www.cp-carrillo.com

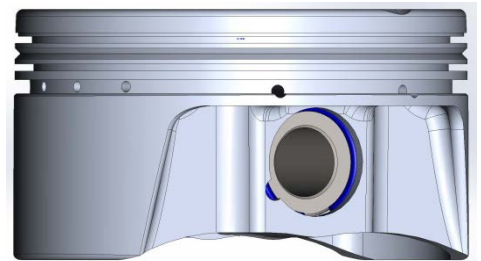
### CP-Carrillo Wire Lock installation instructions:

Most performance pistons use a floating pin with removable locks, either round wire locks, spiral-wound locks or Kramm Locks. The most common lock is the round-wire lock (or Cir-Clips)



There are 2 locks per piston. Take one wire lock and locate the end in the relief notch in the piston pin hole at 90 degrees from the pick lock groove.

Using a stiff small bladed screwdriver gently press against the lock, pushing it into the groove in the piston. Keep your finger over the other side of the lock to keep it from coming out. Insert the tip into the pick lock groove while you wedge the lock into the groove. Take caution not to damage or kink the lock. With the lock in the piston groove, you need to make sure it is fully engaged.



Using a piston pin, simply slide the pin into the piston and push it against the lock, making sure the lock does not move. It is a good idea to press the pin against both sides of the wire lock to check engagement

Now install the connecting rod and the second lock. Seat the second lock in the same manner as the first.

Just as a precaution, we recommend hitting each side of the wrist pin with the brass drift pin an additional time. Perform these functions on a cloth towel or soft rubber pad so no damage to the piston occurs.