



1902 McGaw Ave  
 Irvine CA, 92614 USA  
 P: 949-567-9000  
 F: 949-567-9010  
[www.cp-carrillo.com](http://www.cp-carrillo.com)

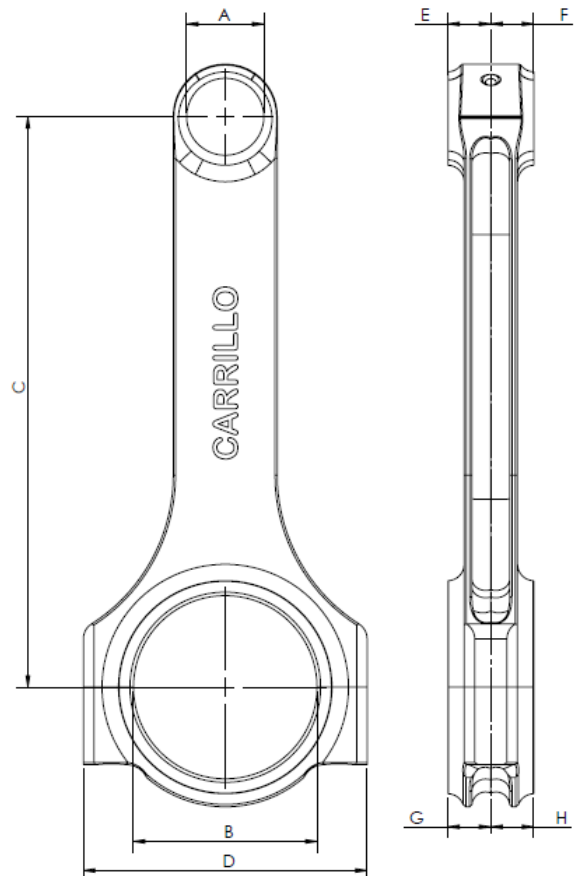
**CUSTOM CONNECTING  
 ROD SPEC SHEET**

Customer:			
Email:			
Address:			
Tel / Fax / Cell:			
City / State:		County / Zip Code:	
Sales Rep:		Date:	

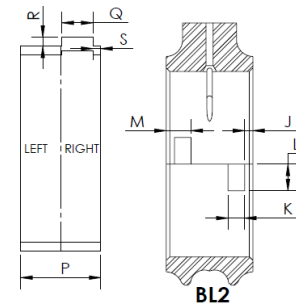
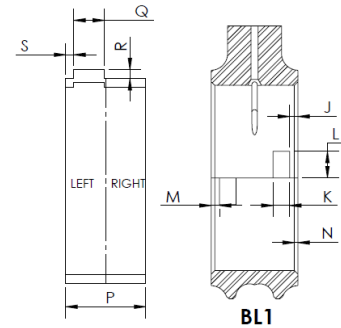
Material	4330M	C107	Aluminum	8620
Rod Style	Standard	Reverse	1 Piece	Angled
Beam Style	H-Beam	A-Beam	Super A	I-Beam
Bushing Material	None	Standard	Upgrade Toughmet	
Bolt Size	1/4	5/16	3/8	7/16
Bolt Material	Standard WMC (H11)		Upgraded CARR (MP35N)	

ENGINE DATA		ADDITIONAL NOTES	
Manufacture:			
Engine Type (Code): <small>(e.g., BBC, EJ25, 2JZ, etc.)</small>			
Application: <small>(e.g., Road Race, Drag Race, etc.)</small>			
No. of Cylinders:			
Bore x Stroke:			
Max. Horsepower @ RPM:			
Max. Torque @ RPM:			
Max RPM:			
Boost Pressure: <small>(if applicable)</small>			
Fuel Type: <small>(e.g., Alcohol, Race Gas, etc.)</small>			
NOS:	Yes <input type="checkbox"/> No <input type="checkbox"/>		
Does engine have oil squirter?	Yes <input type="checkbox"/> No <input type="checkbox"/>		
Piston Assembly Weight: <small>(=piston + pin++ rings + lock)</small>			

GENERAL DIMENSIONS			
	Inches	Millimeters	
Pin OD			
A			
B			
C			
D			
E			
F			
G			
H			
I	Company Logo?	Yes <input type="checkbox"/>	NO <input type="checkbox"/>



Bearing Tang (Check)	BL1	BL2
	Inches	Millimeters
J		
K		
L		
M		
N		
P		
Q		
R		
S		
Rod Bearing Part #		



Upgraded Features (Additional Cost)			
1	Annular Groove	Yes	No
2	Arc Groove (10 & 2 Oiling)	Yes	No
3	Tapered Pin End	Yes	No
4	Forced Pin Oiling (FPO)	Yes	No
5	Lipped Cap	Yes	No
6	Thrust Face Grooves	Yes	No
7	Pin End Pocket	Yes	No
8	Big End Pocket	Yes	No
9	Custom Laser Mark		

