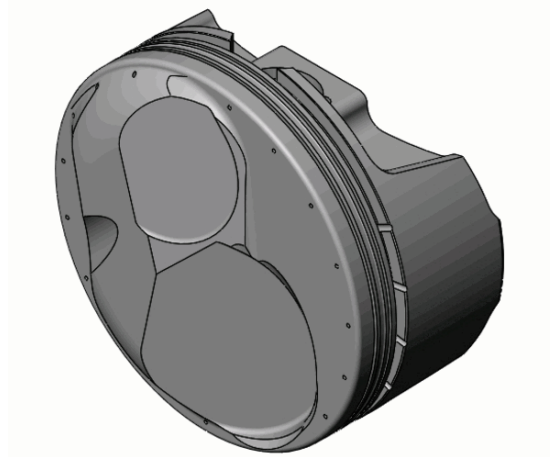


CUSTOMER INFORMATION	
CUSTOMER NAME:	
PO NUMBER:	
JOB NUMBER:	
DATE PRINTED:	5/27/2026
PART NUMBER:	BBCSRE5325-125

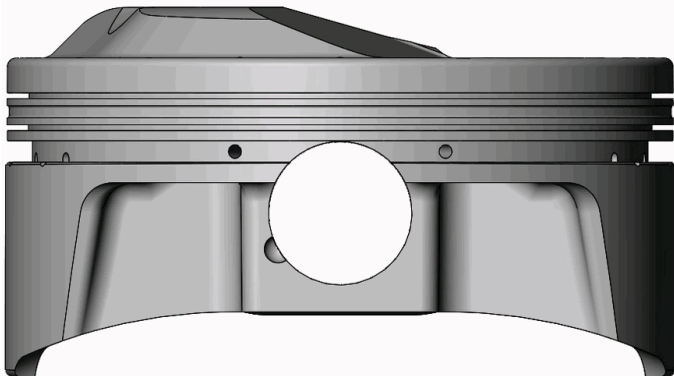


ENGINE SPECIFICATION			
MOTOR: Chevrolet Big Block	HEAD: SR 20	COMP RATIO:	ROD LENGTH:
MOTOR SIZE: 588	HEAD CC:	BLOCK HEIGHT:	TOP RING RADIAL:
BORE: 4.625	INT VALVE DIA:	GASKET: THK. VOL. BORE	2 <sup>nd</sup> RING RADIAL:
STROKE:	EXT VALVE DIA:	DECK CLEARANCE:	OIL RING RADIAL:

PISTON SPECIFICATION			
FORGING#: 55H/	DISH/DEPTH:	PIN DIAMETER: .990	
DOME HEIGHT: .350	CAM PROFILE: 10F45C5L18	PIN FIT TO: .9913	
DOME/DISH VOL: 24.470	TOP LAND VOL.: -.990	PISTON TO CYL CLEAR: .0050	PIN LENGTH: 2.750

RING DATA	GROOVE WIDTH		GROOVE DIAMETER	
	INCH	METRIC	INCH	METRIC
TOP RING	.0400	1.016	4.2890	108.9406
2 <sup>ND</sup> RING	.0400	1.016	4.3010	109.2454
OIL RING	.1490	3.7846	4.2450	107.823

VALVE RELIEF	INTAKE		EXHAUST	
	INCH	METRIC	INCH	METRIC
POCKET DEPTH	-.3550	-9.017	.0200	.508
POCKET ANGLE	20.000°		13.000°	
POCKET DIA.	2.5650	65.151	2.0000	50.800



COATINGS:	-
-----------	---

PISTON WEIGHT:	596
----------------	-----

COMPRESSION HEIGHT:	1.070	CENTER OF PIN TO DECK
---------------------	-------	-----------------------

TURN DIA:	4.6200
-----------	--------

GAUGE POINT:	.400	INCHES UP FROM BOTTOM OF SKIRT
--------------	------	--------------------------------