

CUSTOMER INFORMATION	
CUSTOMER NAME:	
PO NUMBER:	
JOB NUMBER:	
DATE PRINTED:	8/21/2020
PART NUMBER:	D7107

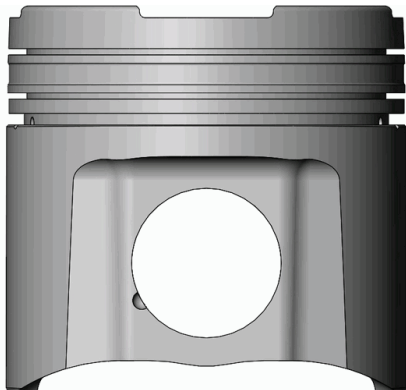


ENGINE SPECIFICATION			
MOTOR:	Cummins	HEAD:	ISB-CR 24V
MOTOR SIZE:	6.7	COMP RATIO:	
BORE:	4.233	HEAD CC:	
STROKE:		ROD LENGTH:	
		BLOCK HEIGHT:	
		TOP RING RADIAL:	.150
		INT VALVE DIA:	
		GASKET THK:	
		2 <sup>nd</sup> RING RADIAL:	.170
		DECK CLEARANCE:	
		OIL RING RADIAL:	.130

PISTON SPECIFICATION			
FORGING#:	DSL102/	DISH/DEPTH:	-.466
DOME HEIGHT:	.000	PIN DIAMETER:	1.575
		CAM PROFILE:	CP2DSL1
		PIN FIT TO:	1.5768
DOME/DISH VOL:	-55.210	TOP LAND VOL.:	-3.970
		PISTON TO CYL CLEAR:	.0100
		PIN LENGTH:	3.155

RING DATA	GROOVE WIDTH		GROOVE DIAMETER	
	INCH	METRIC	INCH	METRIC
TOP RING	.0640	1.6764	3.7860	96.1644
2 <sup>ND</sup> RING	.0640	1.6764	3.7840	96.1136
OIL RING	.1190	3.0734	3.8380	97.4852

VALVE RELIEF	INTAKE		EXHAUST	
	INCH	METRIC	INCH	METRIC
POCKET DEPTH				
POCKET ANGLE				
POCKET DIA.				



COATINGS:	Entire Piston Type III (Green) Anodize
-----------	--

PISTON WEIGHT:	1,236
----------------	-------

COMPRESSION HEIGHT:	2.707	CENTER OF PIN TO DECK
---------------------	-------	-----------------------

TURN DIA:	4.2230
-----------	--------

GAUGE POINT:	.400	INCHES UP FROM BOTTOM OF SKIRT
--------------	------	--------------------------------