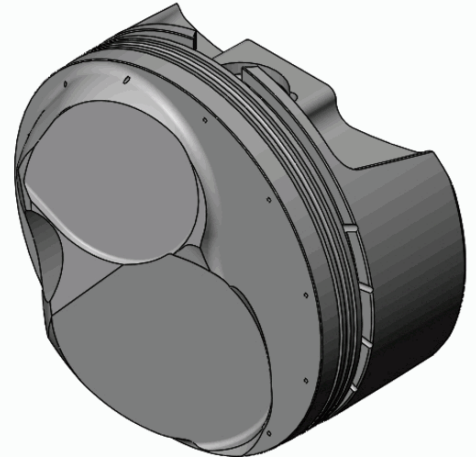


CUSTOMER INFORMATION

CUSTOMER NAME:	
PO NUMBER:	
JOB NUMBER:	
DATE PRINTED:	9/18/2020
PART NUMBER:	BBCRE5330-030



ENGINE SPECIFICATION

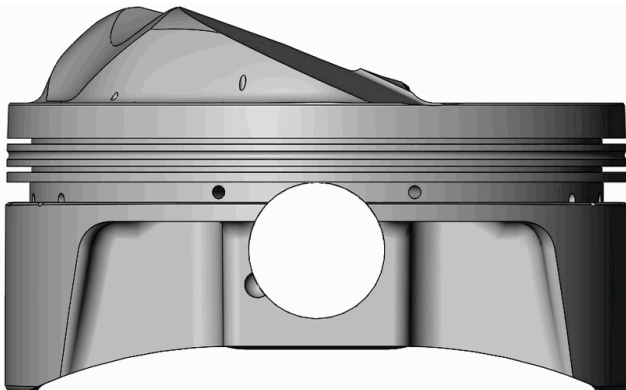
MOTOR:	Chevrolet Big Block	HEAD:	Head Hunter	COMP RATIO:	14.6:1	ROD LENGTH:	6.535
MOTOR SIZE:	564	HEAD CC:	118	BLOCK HEIGHT:	9.800	TOP RING RADIAL:	.167
BORE:	4.530	INT VALVE DIA:	2.400	GASKET THK:		2 nd RING RADIAL:	.168
STROKE:	4.375	EXT VALVE DIA:	1.900	DECK CLEARANCE:	.008	OIL RING RADIAL:	.158

PISTON SPECIFICATION

FORGING#:	55H/	DISH/DEPTH:		PIN DIAMETER:	.990
DOME HEIGHT:	.700	CAM PROFILE:	10F45C5L18	PIN FIT TO:	.9915
DOME/DISH VOL:	46.810	TOP LAND VOL.:	-1.510	PISTON TO CYL CLEAR:	.0055
				PIN LENGTH:	2.750

RING DATA	GROOVE WIDTH		GROOVE DIAMETER	
	INCH	METRIC	INCH	METRIC
TOP RING	.0435	1.1049	4.1450	105.283
2 ND RING	.0440	1.1176	4.1430	105.2322
OIL RING	.1490	3.7846	4.1630	105.7402

VALVE RELIEF	INTAKE		EXHAUST	
	INCH	METRIC	INCH	METRIC
POCKET DEPTH	-.3150	-8.001	.1000	2.540
POCKET ANGLE	24.000°		15.000°	
POCKET DIA.	2.5500	64.770	2.0500	52.070



COATINGS:	-
-----------	---

PISTON WEIGHT:	623
----------------	-----

COMPRESSION HEIGHT:	1.070	CENTER OF PIN TO DECK
---------------------	-------	-----------------------

TURN DIA:	4.5245
-----------	--------

GAUGE POINT:	.400	INCHES UP FROM BOTTOM OF SKIRT
--------------	------	--------------------------------