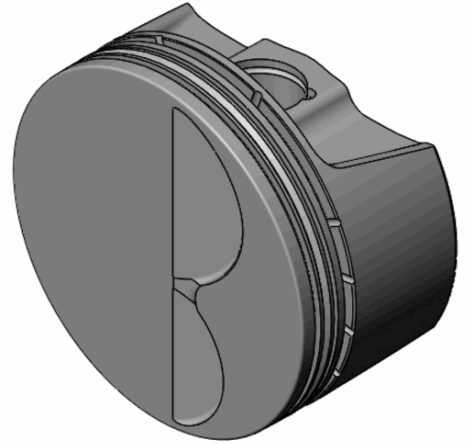


CUSTOMER INFORMATION

CUSTOMER NAME:	
PO NUMBER:	
JOB NUMBER:	
DATE PRINTED:	9/18/2020
PART NUMBER:	BLS1220-030



ENGINE SPECIFICATION

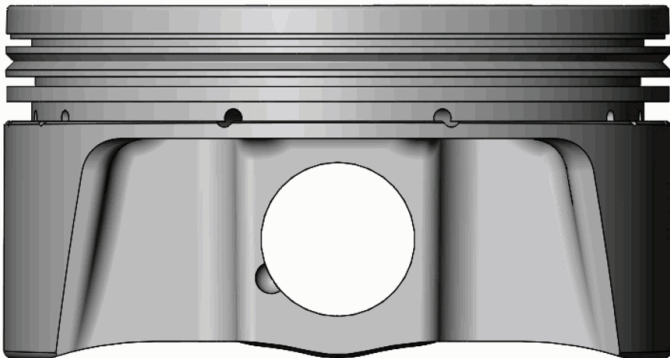
MOTOR:	Chevrolet SB	HEAD:	TFS LS 13.5	COMP RATIO:		ROD LENGTH:	
MOTOR SIZE:	350	HEAD CC:		BLOCK HEIGHT:		TOP RING RADIAL:	
BORE:	4.030	INT VALVE DIA:		GASKET THK:		2 nd RING RADIAL:	
STROKE:		EXT VALVE DIA:		DECK CLEARANCE:		OIL RING RADIAL:	

PISTON SPECIFICATION

FORGING#:	L10/L10	DISH/DEPTH:		PIN DIAMETER:	.927
DOME HEIGHT:	.000	CAM PROFILE:	5C6T15	PIN FIT TO:	.9280
DOME/DISH VOL:	-3.000	TOP LAND VOL.:	-1.040	PISTON TO CYL CLEAR:	.0060
				PIN LENGTH:	2.250

RING DATA	GROOVE WIDTH		GROOVE DIAMETER	
	INCH	METRIC	INCH	METRIC
TOP RING	.0480	1.2192	3.6850	93.599
2 ND RING	.0600	1.524	3.6450	92.583
OIL RING	.1190	3.0226	3.6850	93.599

VALVE RELIEF	INTAKE		EXHAUST	
	INCH	METRIC	INCH	METRIC
POCKET DEPTH	-.1950	-4.953	SP	SP
POCKET ANGLE	13.500°		13.500°	
POCKET DIA.	2.1500	54.610	1.7000	43.180



COATINGS:	-
-----------	---

PISTON WEIGHT:	467
----------------	------------

COMPRESSION HEIGHT:	1.407	CENTER OF PIN TO DECK
---------------------	--------------	-----------------------

TURN DIA:	4.0240	NOTE: Cast Iron Block .0045 min -.007 max piston to wall
-----------	---------------	--

GAUGE POINT:	.500	INCHES UP FROM BOTTOM OF SKIRT
--------------	-------------	--------------------------------