

CUSTOMER INFORMATION	
CUSTOMER NAME:	
PO NUMBER:	
JOB NUMBER:	
DATE PRINTED:	9/18/2020
PART NUMBER:	D7108

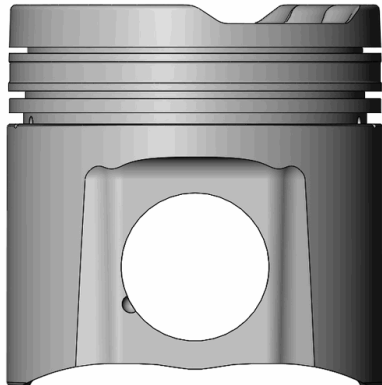


ENGINE SPECIFICATION							
MOTOR:	Cummins	HEAD:	ISB-CR 12V	COMP RATIO:	15.5:1	ROD LENGTH:	7.559
MOTOR SIZE:	5.9	HEAD CC:	6	BLOCK HEIGHT:	12.708	TOP RING RADIAL:	.173
BORE:	4.020	INT VALVE DIA:	2.000	GASKET THK:	.056	2 <sup>nd</sup> RING RADIAL:	.168
STROKE:	4.724	EXT VALVE DIA:	1.750	DECK CLEARANCE:	.000	OIL RING RADIAL:	.119

PISTON SPECIFICATION							
FORGING#:	DSL102/	DISH/DEPTH:	-.440	PIN DIAMETER:	1.575		
DOME HEIGHT:	.000	CAM PROFILE:	CP2DSL1	PIN FIT TO:	1.5768		
DOVE/DISH VOL:	-44.190	TOP LAND VOL.:	-3.760	PISTON TO CYL CLEAR:	.0100	PIN LENGTH:	3.155

RING DATA	GROOVE WIDTH		GROOVE DIAMETER	
	INCH	METRIC	INCH	METRIC
TOP RING	.0640	1.6764	3.5680	90.6272
2 <sup>ND</sup> RING	.0793	2.065	3.6120	91.7448
OIL RING	.1190	3.0734	3.6520	92.7608

VALVE RELIEF	INTAKE		EXHAUST	
	INCH	METRIC	INCH	METRIC
POCKET DEPTH				
POCKET ANGLE				
POCKET DIA.				



COATINGS:	Entire Piston Type III (Green) Anodize
-----------	--

PISTON WEIGHT:	0
----------------	---

COMPRESSION HEIGHT:	2.786	CENTER OF PIN TO DECK
---------------------	-------	-----------------------

TURN DIA:	4.0100
-----------	--------

GAUGE POINT:	.400	INCHES UP FROM BOTTOM OF SKIRT
--------------	------	--------------------------------