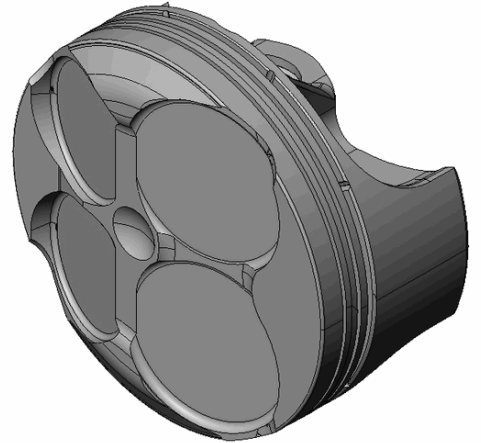


## CUSTOMER INFORMATION

CUSTOMER NAME:	
PO NUMBER:	
JOB NUMBER:	
DATE PRINTED:	<b>9/18/2020</b>
PART NUMBER:	<b>MX4050C</b>



## ENGINE SPECIFICATION

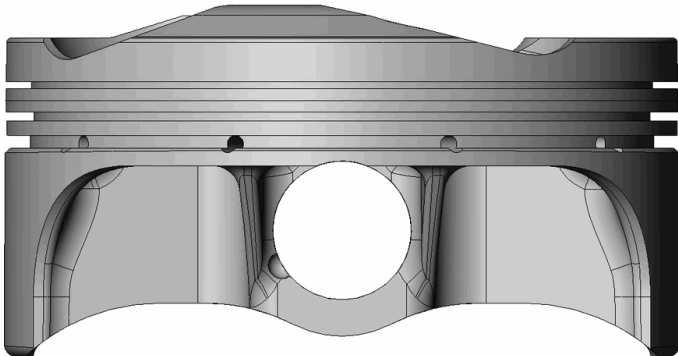
MOTOR:	<b>Suzuki (MC)</b>	HEAD:	<b>GSX R1000 2017</b>	COMP RATIO:	<b>14.5:1</b>	ROD LENGTH:	<b>4.449</b>
MOTOR SIZE:	<b>1053</b>	HEAD CC:	<b>15</b>	BLOCK HEIGHT:		TOP RING RADIAL:	<b>.111</b>
BORE:	<b>3.0709</b>	INT VALVE DIA:	<b>1.280</b>	GASKET THK:	<b>.028</b>	2 <sup>nd</sup> RING RADIAL:	<b>.120</b>
STROKE:	<b>2.169</b>	EXT VALVE DIA:	<b>.985</b>	DECK CLEARANCE:	<b>.005</b>	OIL RING RADIAL:	<b>.103</b>

## PISTON SPECIFICATION

FORGING#:	<b>MCX76</b>	DISH/DEPTH:		PIN DIAMETER:	<b>.630</b>
DOME HEIGHT:	<b>.150</b>	CAM PROFILE:	<b>10F45C65L18</b>	PIN FIT TO:	<b>.6306</b>
DOME/DISH VOL:	<b>-.360</b>	TOP LAND VOL.:	<b>-.360</b>	PISTON TO CYL CLEAR:	<b>.0020</b>
				PIN LENGTH:	<b>1.650</b>

RING DATA	GROOVE WIDTH		GROOVE DIAMETER	
	INCH	METRIC	INCH	METRIC
TOP RING	<b>.0318</b>	<b>.8077</b>	<b>2.8230</b>	<b>71.7042</b>
2 <sup>ND</sup> RING	<b>.0400</b>	<b>1.016</b>	<b>2.7980</b>	<b>71.0692</b>
OIL RING	<b>.0600</b>	<b>1.524</b>	<b>2.8350</b>	<b>72.009</b>

VALVE RELIEF	INTAKE		EXHAUST	
	INCH	METRIC	INCH	METRIC
POCKET DEPTH	<b>-.1580</b>	<b>-4.0132</b>	<b>-.1530</b>	<b>-3.8862</b>
POCKET ANGLE	<b>12.000°</b>		<b>17.000°</b>	
POCKET DIA.	<b>1.3800</b>	<b>35.052</b>	<b>1.0850</b>	<b>27.559</b>



COATINGS:	-
-----------	---

PISTON WEIGHT:	<b>196</b>
----------------	------------

COMPRESSION HEIGHT:	<b>.874</b>	CENTER OF PIN TO DECK
---------------------	-------------	-----------------------

TURN DIA:	<b>3.0689</b>
-----------	---------------

GAUGE POINT:	<b>.400</b>	INCHES UP FROM BOTTOM OF SKIRT
--------------	-------------	--------------------------------