

CUSTOMER INFORMATION

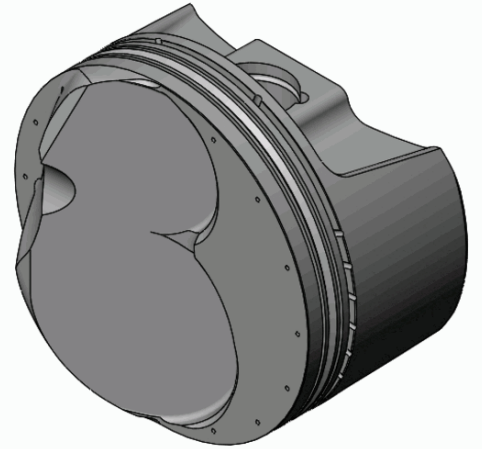
CUSTOMER NAME:

PO NUMBER:

JOB NUMBER:

DATE PRINTED: **6/4/2021**

PART NUMBER: **BCRE1330-005**



ENGINE SPECIFICATION

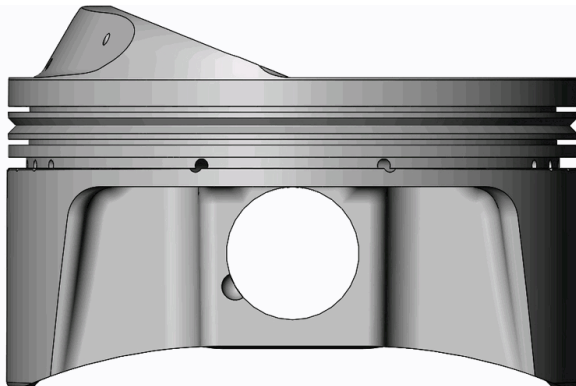
MOTOR:	Chevrolet SB	HEAD:	ASCS	COMP RATIO:	14.2:1	ROD LENGTH:	6.000
MOTOR SIZE:	358	HEAD CC:	9	BLOCK HEIGHT:	58.000	TOP RING RADIAL:	.139
BORE:	4.005	INT VALVE DIA:	2.080	GASKET THK:		2 nd RING RADIAL:	.131
STROKE:	3.550	EXT VALVE DIA:	1.625	DECK CLEARANCE:	.000	OIL RING RADIAL:	.110

PISTON SPECIFICATION

FORGING#:	20H/20H	DISH/DEPTH:		PIN DIAMETER:	.927
DOME HEIGHT:	.500	CAM PROFILE:	5C65T17	PIN FIT TO:	.9283
DOME/DISH VOL:	13.750	TOP LAND VOL.:	-.710	PISTON TO CYL CLEAR:	.0065
				PIN LENGTH:	2.250

RING DATA	GROOVE WIDTH		GROOVE DIAMETER	
	INCH	METRIC	INCH	METRIC
TOP RING	.0400	1.016	3.6760	93.3704
2 ND RING	.0395	1.0033	3.6900	93.726
OIL RING	.0780	1.9812	3.7250	94.615

VALVE RELIEF	INTAKE		EXHAUST	
	INCH	METRIC	INCH	METRIC
POCKET DEPTH	-.3350	-8.509	SP	SP
POCKET ANGLE	22.000°		22.000°	
POCKET DIA.	2.2500	57.150	1.7900	45.466



COATINGS:	-
-----------	---

PISTON WEIGHT:	462
----------------	------------

COMPRESSION HEIGHT:	1.225	CENTER OF PIN TO DECK
---------------------	--------------	-----------------------

TURN DIA:	3.9985
-----------	---------------

GAUGE POINT:	.500	INCHES UP FROM BOTTOM OF SKIRT
--------------	-------------	--------------------------------